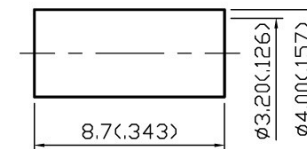
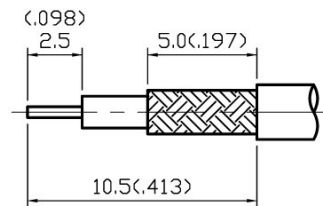
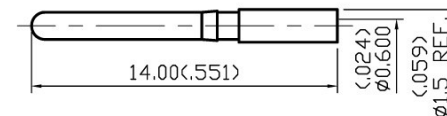
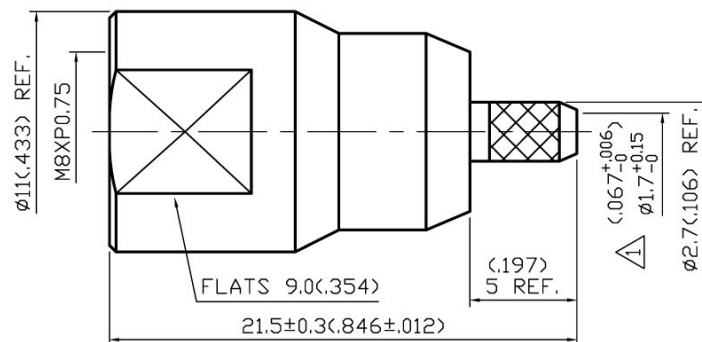


NO	DESCRIPTION	DATE
①	$\phi 1.70 \rightarrow \phi 1.7^{+0.15}_{-0}$	04.27.98
②	BACKGROUND FORMAT UPDATED ADD STRIPPING DIMENSION	03.09.09'



△ STRIPPING DIMENSION

1.0 ELECTRICAL

1.1 FREQUENCY RANGE: DC-1.8 GHz

1.2 NOMINAL IMPEDANCE: 50 OHM

2.0 MATERIALS

2.1 BODIES: BRASS PER JIS-C3604

2.2 CENTER CONTACT: BRASS PER JIS-C3604

2.3 INSULATION: TEFLON PER ASTM D1457 AND ASTM D1710

2.4 CRIMP FERRULE: BRASS PER JIS-C2700

3.0 FINISHES AND OTHERS

3.1 SEE BELOW TABLE FOR DETAILS.

4.0 MECHANICAL

4.1 FOR USE WITH RG174U OR SIMILAR STYLE CABLE

4.2 CABLE ATTACHMENT: OUTER: CRIMP, INNER: CRIMP

4.3 CABLE RETENTION 15 lbs MIN.

4.4 CRIMP SIZE REQUIRED: CONTACT: 1.06(.042) SQ. CRIMP TOOL
FERRULE: 3.5(.138) HEX. CRIMP TOOL

5.0 ENVIRONMENTAL

5.1 OPERATING TEMPERATURE RANGE: -55° C TO +125° C

5	CRIMP FERRULE	BRASS	1	NICKEL
4	CENTER CONTACT	BRASS	1	GOLD
3	CHASSIS	BRASS	1	NICKEL 100μ" MIN.
2	INSULATION	TEFLON	1	NONE
1	BODY	BRASS	1	NICKEL 100μ" MIN.
NO	DESCRIPTION	MATERIAL	Q'TY	FINISH

APPROVED

by _____ DATE: _____

DESCRIPTION			FME STRAIGHT PLUG CRIMP									
製圖	DRAWN	TOLERANCE		品名	23-07-5 T.G.N 174U			日期	DATE	版次	REV.	
	Yoko	X	±0.2	TITLE	ROHS COMPLIANT (50Ω)			04.18.97			A-2	
檢圖	CHECK	XX	±0.1	單位	UNIT	DWG.NO.	ADA-23075					
	Jccky	XXX	±0.05		mm(in)							
認定	APPROVAL	ANGLE	±5°	比例	SCALE							
	Lewis				4:1							

ADAQUS