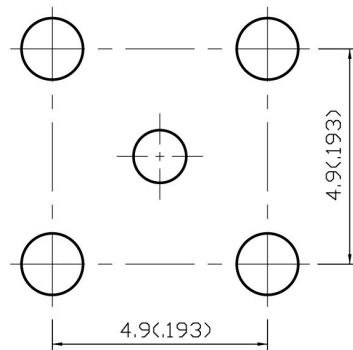


NO	DESCRIPTION	DATE
①	Ø1.2 MIN. → Ø1.4 MIN. Ø1.1 MIN. → Ø1.2 MIN. ADD THERE DIMENTION	12.27.01'
②	BACKGROUND FORMAT UPDATED	07.27.02'
③	DRAWING UPDATED	10.06.03'
④	BACKGROUND FORMAT UPDATED ADD SILVER BRAZING	04.15.09'



④ (4) Ø1.4 (0.055) MIN.
④ (1) Ø1.2 (0.047) MIN.

1.0 ELECTRICAL

- 1.1 FREQUENCY RANGE: DC-6 GHz
1.2 NOMINAL IMPEDANCE: 50 OHM
1.3 WORKING VOLTAGE: 335 VOLTS MAX.
1.4 PROOF VOLTAGE: 1000 VOLTS
1.5 VSWR: 1.5 MAX. @1GHz
1.63 MAX. @3GHz

MOUNTING HOLE

2.0 MATERIALS

- 2.1 BODIES: BRASS PER JIS-C3604
2.2 CENTER CONTACT: BERYLLIUM COPPER PER ASTM B196 UNS C17300
2.3 INSULATION: TEFLON PER ASTM D1457 AND ASTM D1710

3.0 FINISHES AND OTHERS

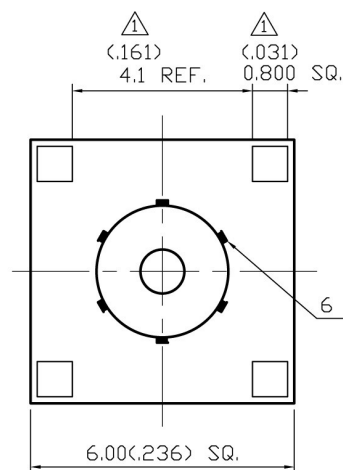
- 3.1 SEE BELOW TABLE FOR DETAILS.

4.0 MECHANICAL

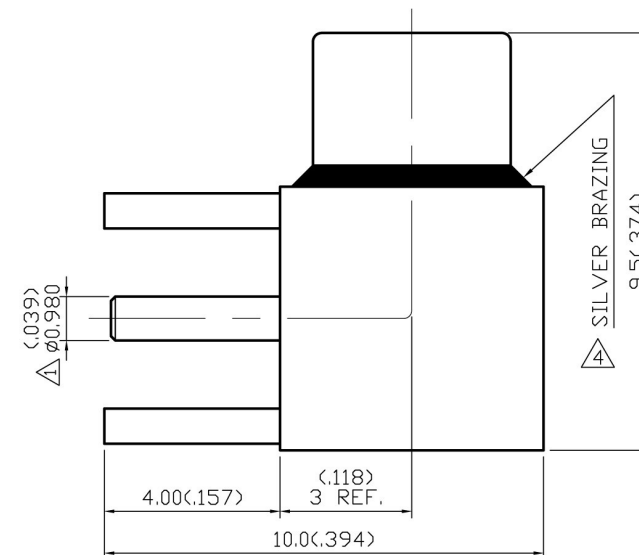
- 4.1 INTERFACE IN ACCORDANCE WITH: CECC 22220

5.0 ENVIRONMENTAL

- 5.1 OPERATING TEMPERATURE RANGE: -55° C TO +155° C



6 STAMPING ③



SILVER BRAZING ④

APPROVED

by _____ DATE: _____

NO	DESCRIPTION	MATERIAL	Q'TY	FINISH
5	INSULATION	TEFLON	1	NONE
4	BODY II	BRASS	1	GOLD 3μ" MIN.
3	BODY I	BRASS	1	GOLD 3μ" MIN.
2	INSULATION	TEFLON	1	NONE
1	CENTER CONTACT	BERYLLIUM COPPER	1	GOLD 30μ" MIN.

DESCRIPTION		MCX RIGHT ANGLE PCB MOUNT JACK RECEPTACLE				DATE	REV.
製圖	DRAWN	TOLERANCE	品名	ADA-2709 T.G.G	日期	05.13.99'	A-4
檢圖	CHECK	.X ±0.2	TITLE	\ROHS COMPLIANT (50Ω)	版次		
認圖	Jacky	.XX ±0.1	單位	DWG.NO. 27-0014	SCALE		
認定	APPROVAL	.XXX ±0.05	比例	8:1			
	Lewis	ANGLE ±5°					

ADACTUS