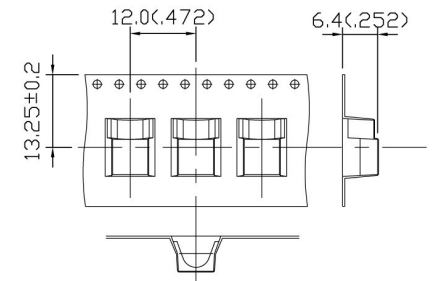
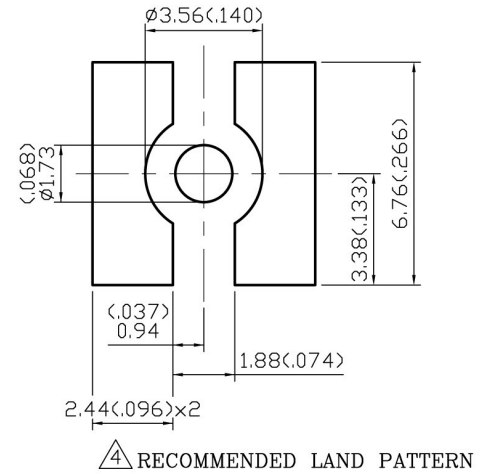
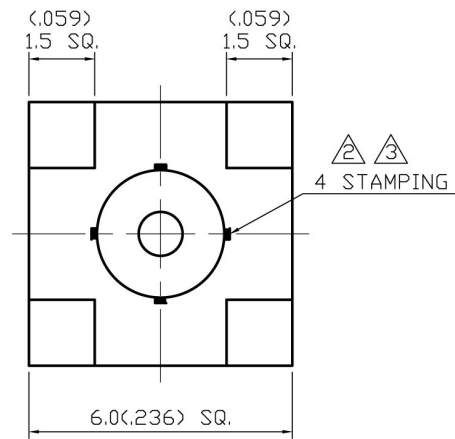
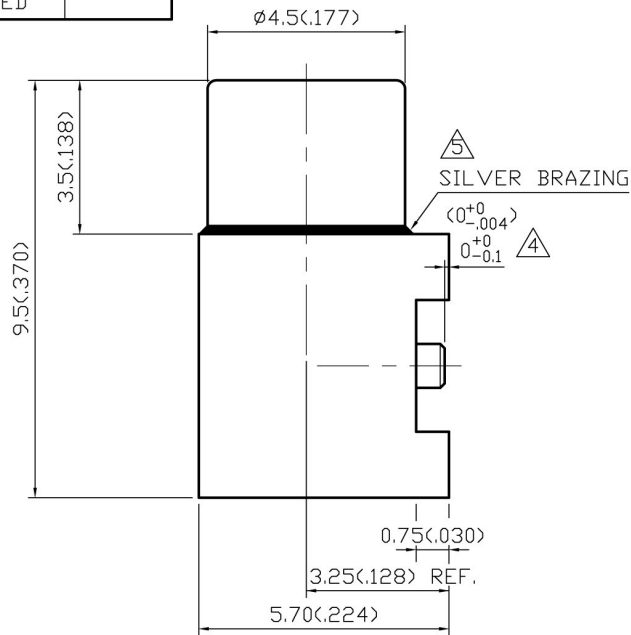


NO	DESCRIPTION	DATE
①	BACKGROUND FORMAT UPDATED	08.01.02
②	DRAWING UPDATED	10.06.03
③	6 STAMPING → 4 STAMPING	11.10.05
④	ADD RECOMMENDED LAND PATTERN ADD TAPE AND REEL PACKAGING ADD 0 <sup>+0</sup> <sub>-0.1</sub>	12.21.06'
⑤	SOLDER → SILVER BRAZING BACKGROUND FORMAT UPDATED	01.12.10'



SCALE: 1:1

## 1.0 ELECTRICAL

- 1.1 FREQUENCY RANGE: DC-6 GHz
- 1.2 NOMINAL IMPEDANCE: 50 OHMS
- 1.3 WORKING VOLTAGE: 335 VOLTS MAX.
- 1.4 PROOF VOLTAGE: 1000 VOLTS
- 1.5 VSWR: 1.5 MAX. @1 GHz  
1.63 MAX. @3 GHz

## 2.0 MATERIALS

- 2.1 BODIES: BRASS PER JIS-C3604
- 2.2 CENTER CONTACT: BERYLLIUM COPPER PER ASTM B196 UNS C17300
- 2.3 INSULATION: TEFLON PER ASTM D1457 AND ASTM D1710

## 3.0 FINISHES AND OTHERS

- 3.1 SEE BELOW TABLE FOR DETAILS.

## 4.0 MECHANICAL

- 4.1 INTERFACE IN ACCORDANCE WITH: CECC 22220

## 5.0 ENVIRONMENTAL

- 5.1 OPERATING TEMPERATURE RANGE: -55° C TO +155° C

NO	DESCRIPTION	MATERIAL	Q'TY	FINISH
5	INSULATION II	TEFLON	1	NONE
4	BODY II	BRASS	1	GOLD 3μ" MIN.
3	CENTER CONTACT	BERYLLIUM COPPER	1	GOLD 30μ" MIN.
2	INSULATION I	TEFLON	1	NONE
1	BODY I	BRASS	1	GOLD 3μ" MIN.

APPROVED

by \_\_\_\_\_ DATE: \_\_\_\_\_

DESCRIPTION		MCX RIGHT ANGLE SURFACE MOUNT JACK RECERTACLE	
製圖	DRAWN	TOLERANCE	品名
檢圖	Yoko	.X ±0.2	ADA-27091 T.G.G
認	CHECK	.XX ±0.1	DATE
定	Jacky	.XXX ±0.05	07.20.00'
	APPROVAL	ANGLE ±5°	版次
	Lewis		A-5
		單位	UNIT
		mm(in)	DWG.NO.
		SCALE	27-0025
		比例	8:1

ADACTUS