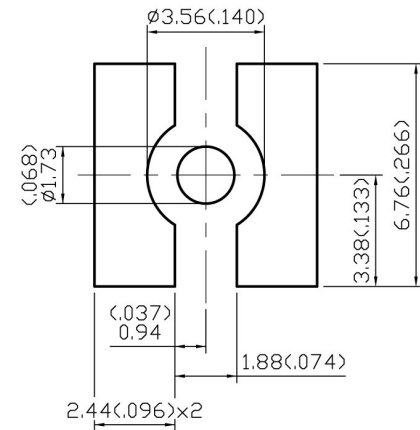
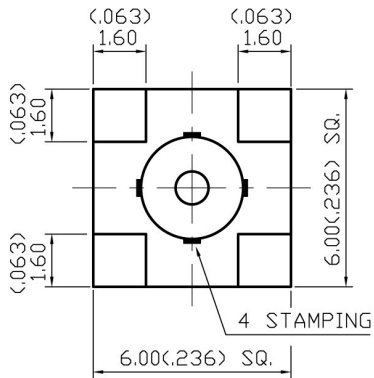
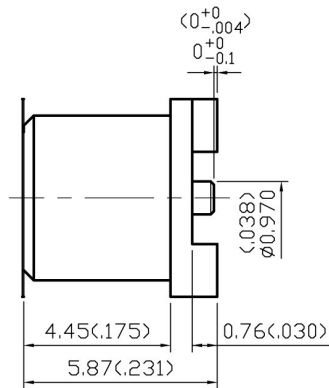
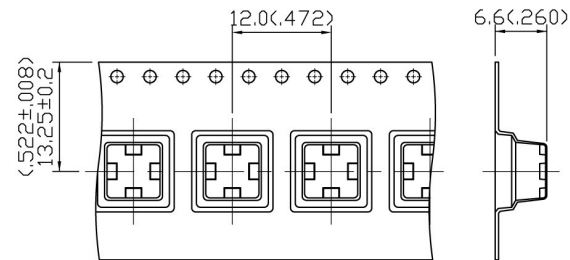


NO	DESCRIPTION	DATE
①	BACKGROUND FORMAT UPDATED	08.03..02
②	ADD TAPE AND REEL PACKAGING	09.14.05
③	ADD PART ④	05.02.06



RECOMMENDED LAND PATTERN



② TAPE AND REEL PACKAGING SCALE 1.5:1

1.0 ELECTRICAL

- 1.1 FREQUENCY RANGE: DC-6 GHz
- 1.2 NOMINAL IMPEDANCE: 50 OHM
- 1.3 WORKING VOLTAGE: 335 VOLTS MAX.
- 1.4 PROOF VOLTAGE: 1000 VOLTS
- 1.5 VSWR: 1.22 MAX@1GHz
1.35 MAX@3GHz

2.0 MATERIALS

- 2.1 BODIES: BRASS PER JIS-C3604
- 2.2 CENTER CONTACT: BERYLLIUM COPPER PER ASTM B196 UNS C17300
- 2.3 INSULATION: TEFLON PER ASTM D1457 AND ASTM D1710

3.0 FINISHES AND OTHERS

- 3.1 SEE BELOW TABLE FOR DETAILS.

4.0 MECHANICAL

- 4.1 INTERFACE IN ACCORDANCE WITH: CECC 22220


5.0 ENVIRONMENTAL

- 5.1 OPERATING TEMPERATURE RANGE: -55° C TO +155° C

4	TAPE	MYLAR	1	NONE
3	CENTER CONTACT	BERYLLIUM COPPER	1	GOLD 30μ" MIN.
2	INSULATION	TEFLON	1	NONE
1	BODY	BRASS	1	GOLD 3μ" MIN.
NO	DESCRIPTION	MATERIAL	Q' TY	FINISH

③

APPROVED by _____ DATE: _____

DESCRIPTION		MCX STRAIGHT JACK SURFACE MOUNT								
製圖	DRAWN	TOLERANCE		品名	ADA-27057 T.G.G		日期	DATE	版次	REV.
	Yoko	.X	±0.2	TITLE	\ROHS COMPLIANT (50Ω)			11.08.01		
檢圖	CHECK	.XX	±0.1	單位	UNIT	DWG.NO. 27-0036				
	Jacky	.XX	±0.1		mm(in)					
認定	APPROVAL	.XXX	±0.05	比例	SCALE					
	Lewis	ANGLE	±5°		6:1					

