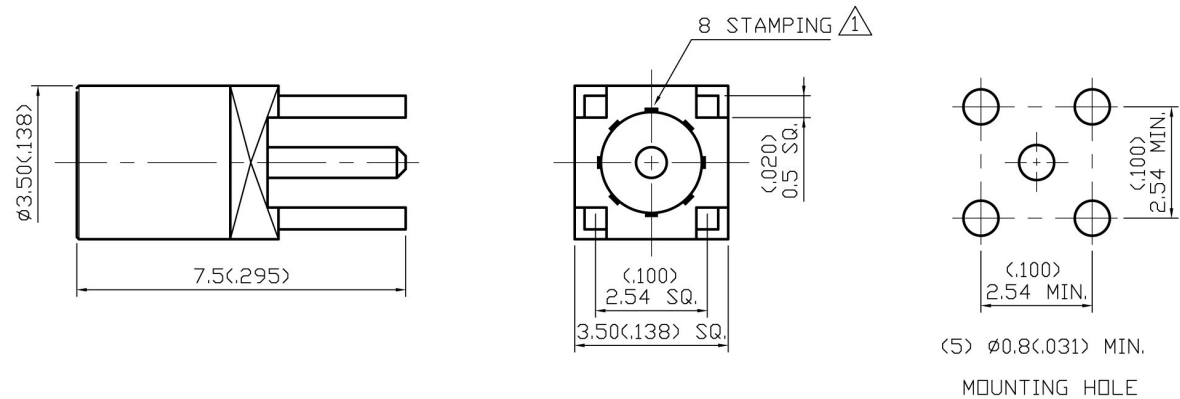


NO	DESCRIPTION	DATE
①	BACKGROUND FORMAT UPDATED ADD 8 STAMPING	08.08.02
②	MODIFICATION NOTES 4.	10.19.04
③	BACKGROUND FORMAT UPDATED	08.15.08'



#### 1.0 ELECTRICAL

- 1.1 FREQUENCY RANGE: DC-6 GHz
- 1.2 NOMINAL IMPEDANCE: 50 OHMS
- 1.3 WORKING VOLTAGE: 250 VOLTS MAX.
- 1.4 PROOF VOLTAGE: 500 VOLTS
- 1.5 VSWR: 1.22 MAX.

#### 2.0 MATERIALS

- 2.1 BODIES: BRASS PER JIS-C3604
- 2.2 CENTER CONTACT: BERYLLIUM COPPER PER ASTM B196 UNS C17300
- 2.3 INSULATION: TEFLON PER ASTM D1457 AND ASTM D1710

#### 3.0 FINISHES AND OTHERS

- 3.1 SEE BELOW TABLE FOR DETAILS.

#### 4.0 MECHANICAL

- 4.1 INTERFACE IN ACCORDANCE WITH: BS EN 122340 ②

#### 5.0 ENVIRONMENTAL

- 5.1 OPERATING TEMPERATURE RANGE: -55° C TO +155° C

3	CENTER CONTACT	BERYLLIUM COPPER	1	GOLD 30 μ" MIN.
2	INSULATION	TEFLON	1	NONE
1	BODY	BRASS	1	GOLD 3 μ" MIN.
NO	DESCRIPTION	MATERIAL	Q'TY	FINISH

APPROVED

by \_\_\_\_\_ DATE: \_\_\_\_\_

DESCRIPTION		MMCX STRAIGHT PCB MOUNT JACK RECEPTACLE			
製圖	DRAWN	TOLERANCE		品名	ADA-37063 T.G.G
	Yoko	.X	±0.2	TITLE	\ROHS COMPLIANT (50Ω)
檢圖	CHECK	.XX	±0.1	單位	mm(in)
	Arc	.XXX	±0.05	SCALE	8:1
認定	APPROVAL	ANGLE	±5°	比例	8:1
DWG.NO.		37-0014			
DATE		11.17.00			
REV.		A-3			

ADATUS