
450/LTE Band Adhesive Antenna

- 450/LTE/4G
- On glass mount
- 1,5 ~ 2,5dBiGain

ADA-0068-450/LTE is an on glass adhesive mount 450/690-2700MHz dipole antenna with SMA connector, 2.5 m RG174 low loss cable as standard.

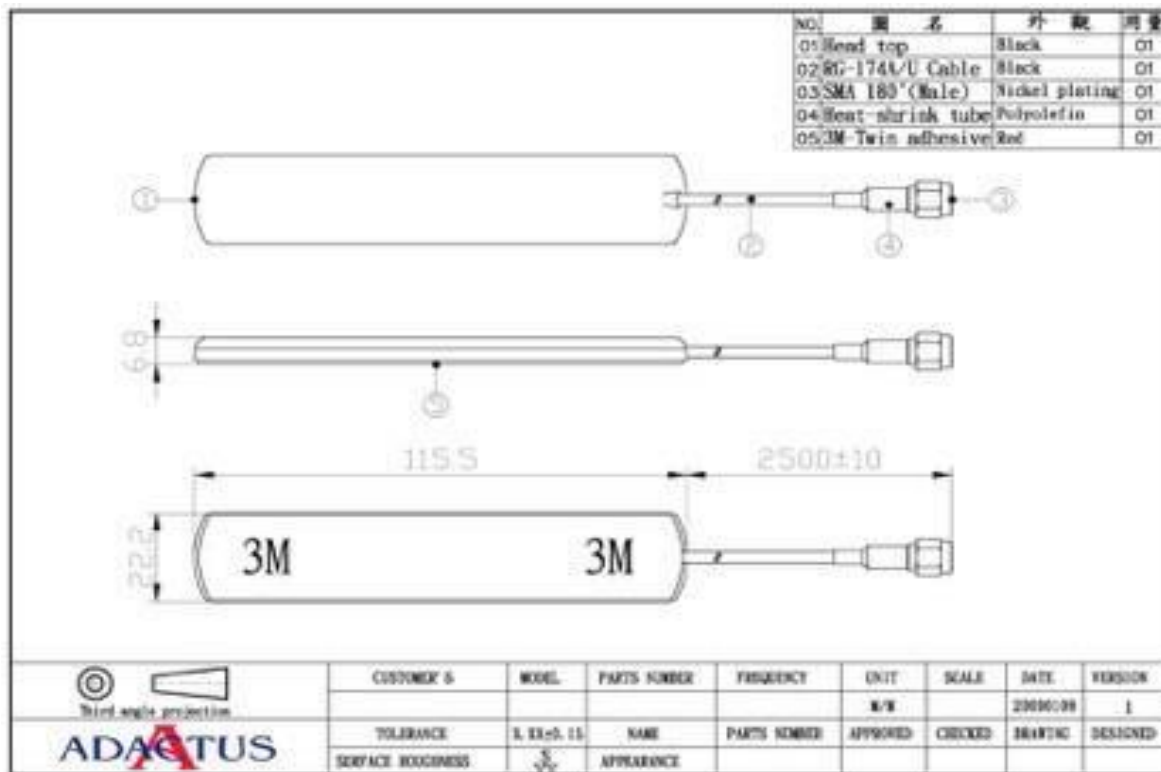


RoHS

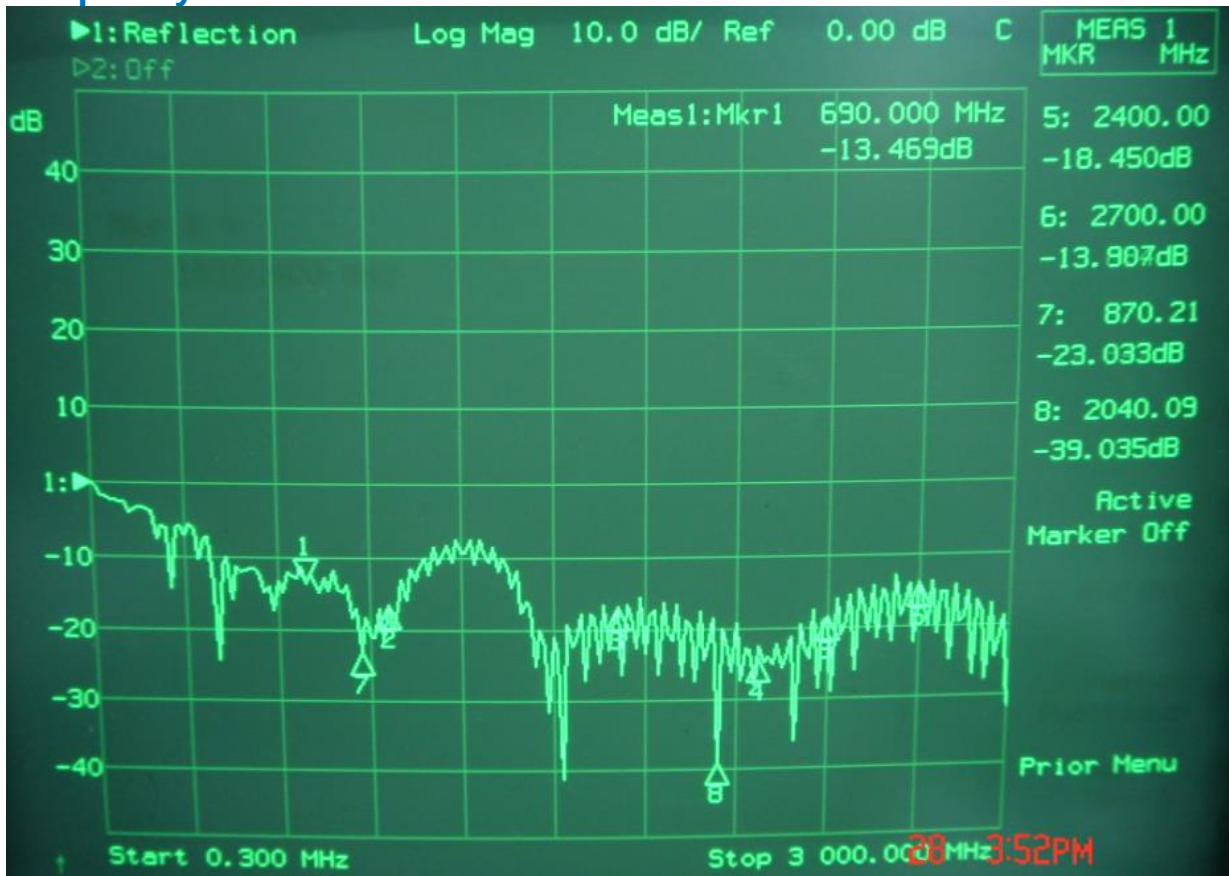
Specification

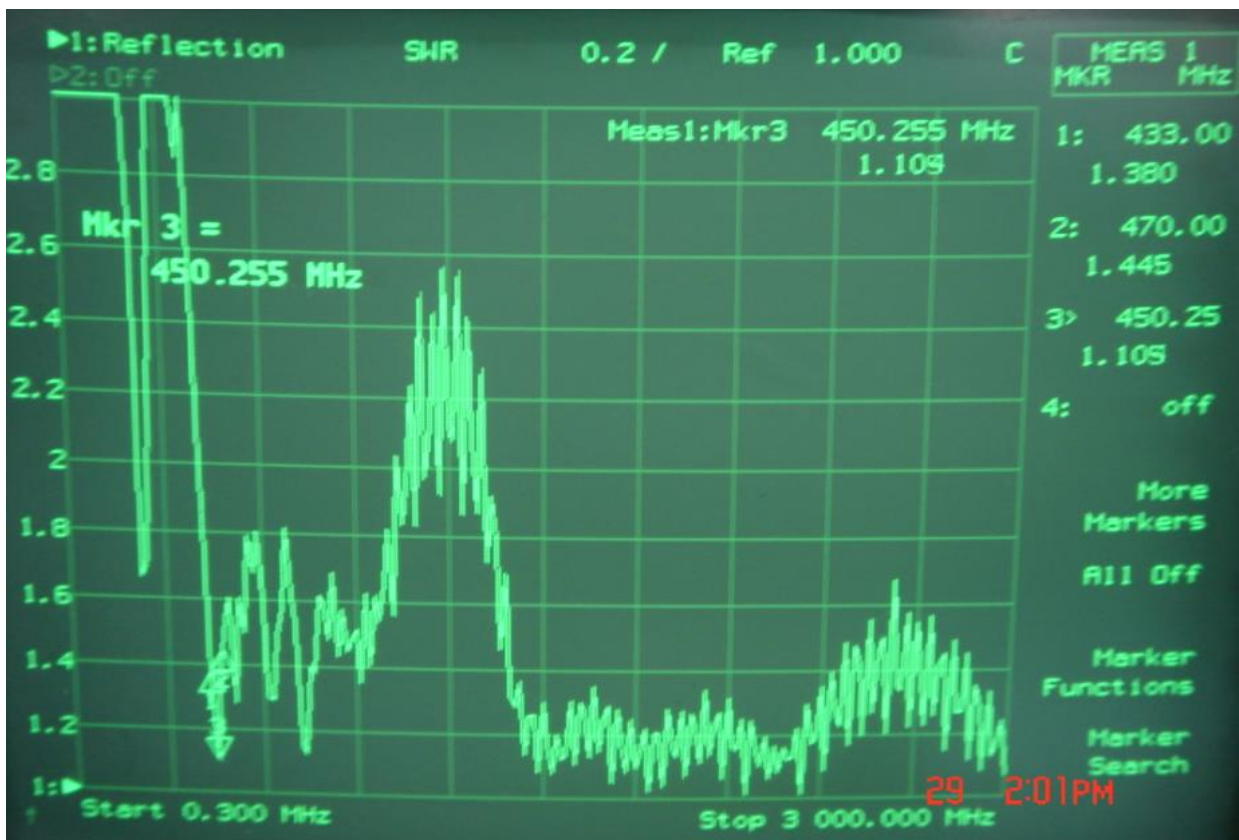
| Antenna | Specification |
|-----------------------|--|
| Frequency Bands | 430-470/690-960/1710-2170/2400-2700MHz |
| Frequency | 450/690-2700 MHz |
| Polarization | Vertical |
| V.S.W.R | <2.0:1 |
| Impedance | 50Ω |
| Gain | 1,5 ~ 2,5 dBi |
| Return Loss | |
| | Environmental Conditions |
| Operating Temperature | -40 + 70 |
| Storage Temperature | -40 + 80 |
| Relative Humidity | 40% to 95% |
| | Mechanical Specification |
| Antenna Material | TPE |
| Antenna Color | Black |
| Cable | RG174 low loss, 2.5m |
| Connector | SMA (M) |
| Size | 115 x 22 x 7mm |
| Weight | 125g Max. |
| Mounting | Adhesive Tape |

Mechanical Dimension



Frequency





Ordering code

| TYPE | Description | Comment |
|------------------|------------------|-----------|
| ADA-0068-450/LTE | On Glass Antenna | 4G/LTE/4G |

Disclaimer

Information furnished is believed to be accurate and reliable. However, Adactus assumes no responsibility for the consequences of use of such information nor for any infringement of patents or other rights of third parties which may result from its use. Adactus reserves the right to make changes without further notice to any product herein to improve reliability, function or design. Adactus does not assume any liability arising out of the application or use of any product described herein.

This publication supersedes and replaces all information previously supplied. Adactus products are not authorised as critical components in life support devices or systems.

