

# ADA-0169W-LTE

---

## LTE/4G Antenna

---

- **Full range 4G/LTE**
- **Weather Proof**
- **3dBi Gain**

ADA-0169W-LTE is a full 4G/LTE bands excellent performing antenna.

Delivered with 5m fixed or detachable white RG58 low loss cable and a white metal bracket. The ADA-0169W-LTE is very well suited for fixed wireless communication devices in remote areas. Omni radiant performance.



## Electrical Properties

Parameter	Description
Frequency Band	690~960/1710~2170/2500~2700MHz
Nominal Impedance	50 ohm
Polarization	Vertical
V.S.W.R	2.0:1
Average Gain	2.0~4.0 dBi
Radiation Pattern	Omni--directional
Return Loss	Please See pages 4--7

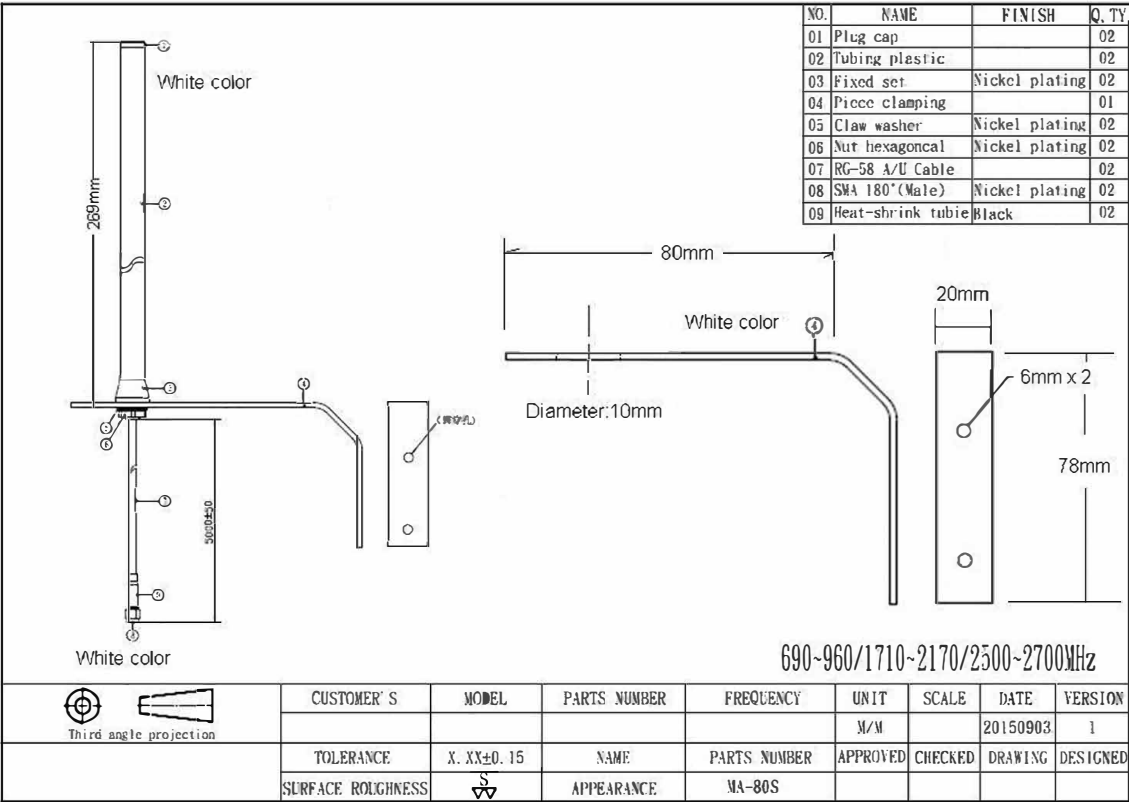
Note: Gain does not include the cable loss

## Mechanical Properties

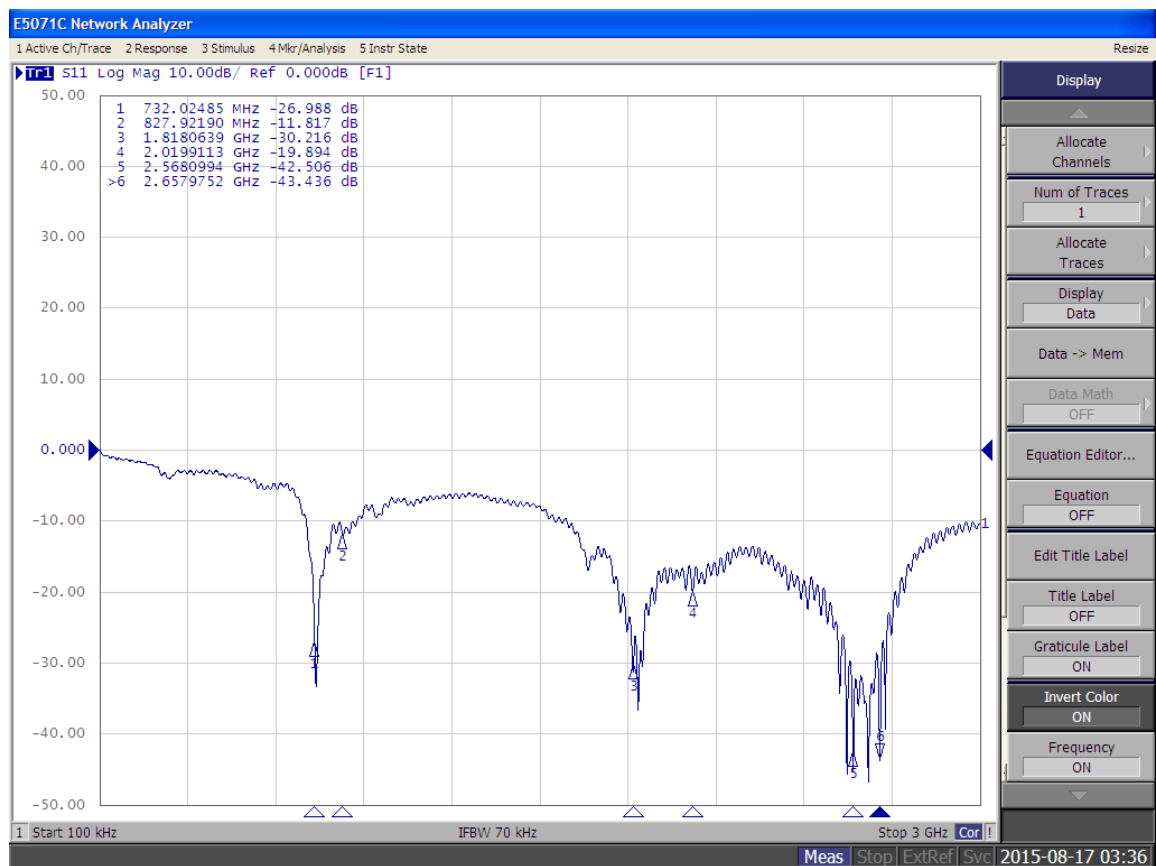
Parameter	Description
Antenna Type	External Antenna
Touch Type	Screw Type
Connector Type	SMA 180°(Male)
Antenna Dimensions	L = 270 mm D = 21mm
Antenna Cable Type/l Length	White RG58A/U 5000mm*
Antenna Color	White
Antenna mount	Wall bracket ,white
Operating Temperature Range	--30°C~+65°C
Storage Temperature Range	--35°C~+70°C

□

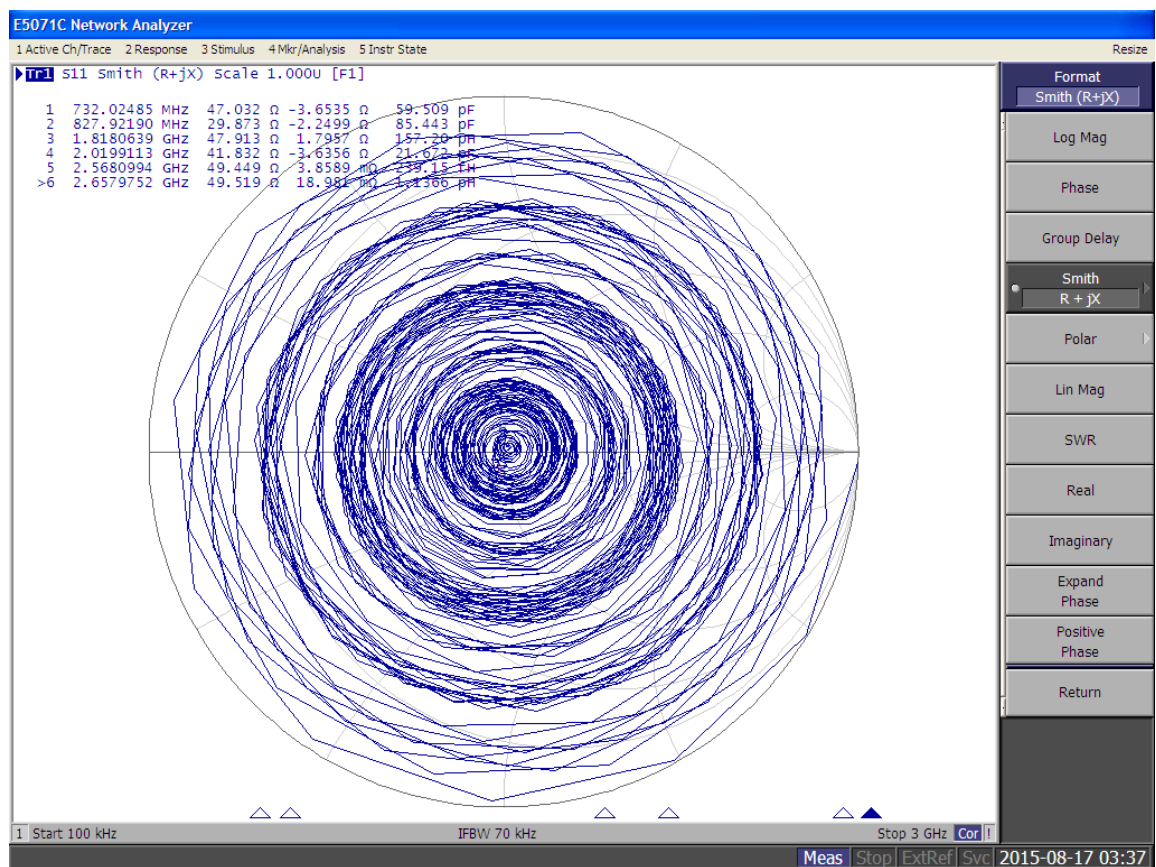
Mechanical Drawing Black Type



## Return Loss, VSWR, Smith Chart







## Ordering codes

ADA-0169W-LTE	External Single 4G/LTE	Single Outdoor 4G/LTE Antenna

For the latest updates, visit our Web site: [www.adactus.se](http://www.adactus.se)

### Disclaimer

Information furnished is believed to be accurate and reliable. However, Adactus assumes no responsibility for the consequences of use of such information nor for any infringement of patents or other rights of third parties which may result from its use. Adactus reserves the right to make changes without further notice to any product herein to improve reliability, function or design. Adactus does not assume any liability arising out of the application or use of any product described herein. This publication supersedes and replaces all information previously supplied. Adactus products are not authorised as critical components in life support devices or systems.